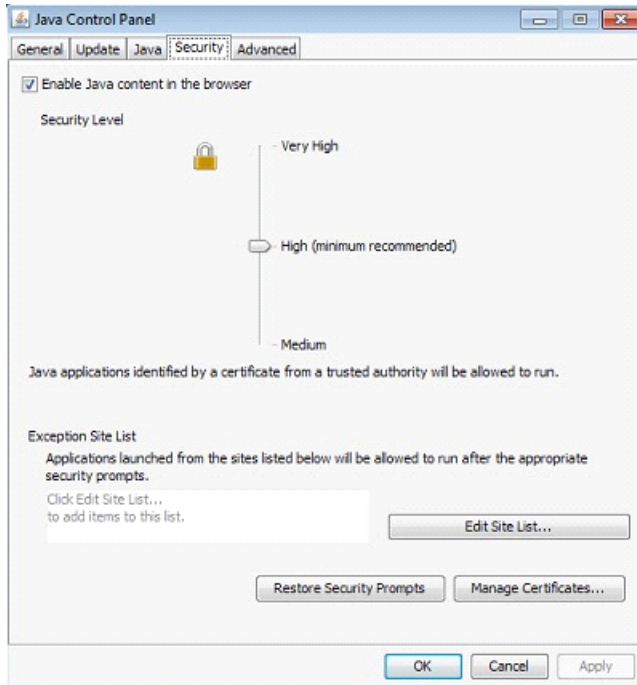


SUGOI! applet guide

1. Set the Java security level to 'medium' through the Java control panel. Go to http://www.java.com/en/download/help/jcp_security.xml for more help with this step.

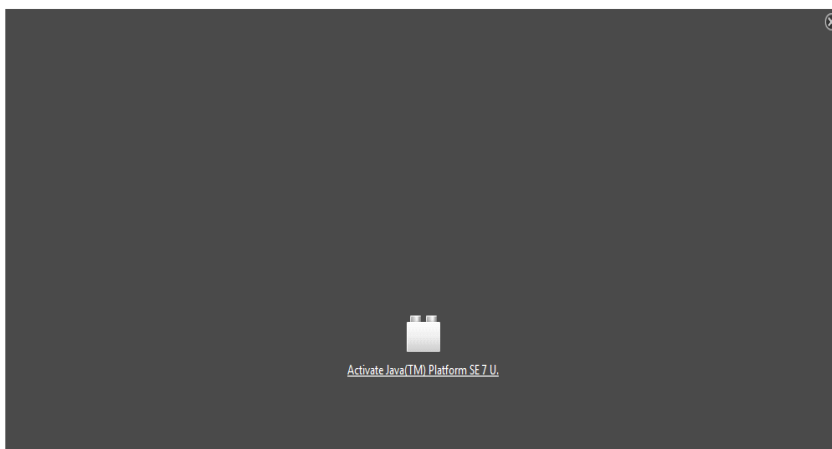


2. Activate the Java TM Platform.

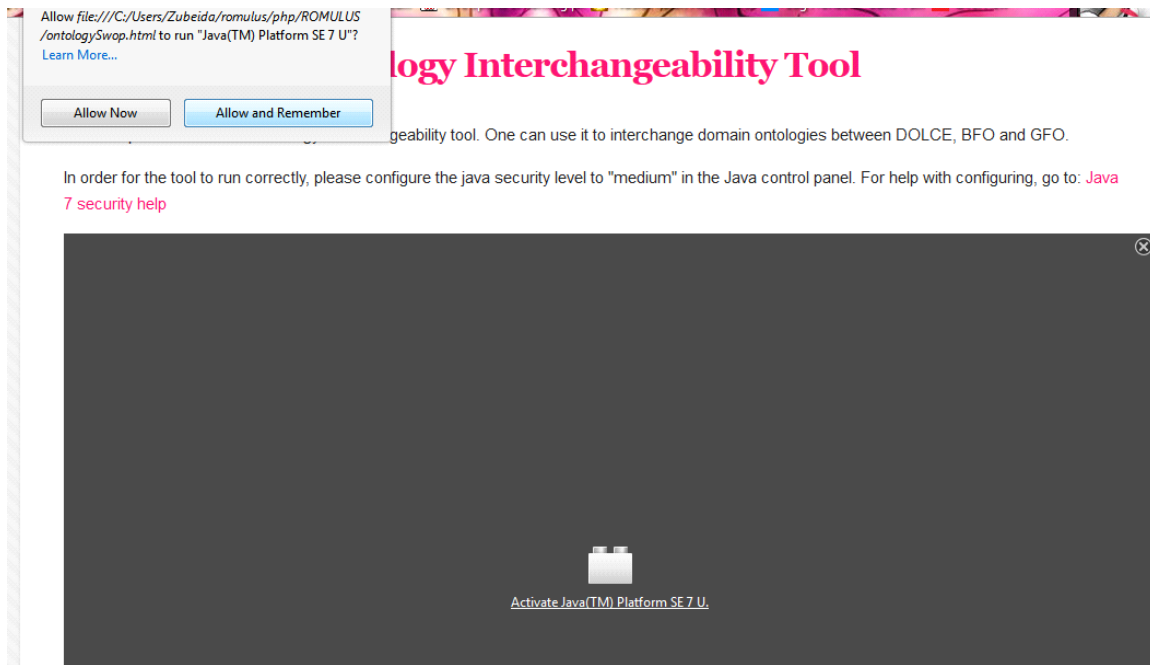
Foundational Ontology Interchangeability Tool

Ontoswap is a foundational ontology interchangeability tool. One can use it to interchange domain ontologies between DOLCE, BFO and GFO.

In order for the tool to run correctly, please configure the java security level to "medium" in the Java control panel. For help with configuring, go to: [Java 7 security help](#)

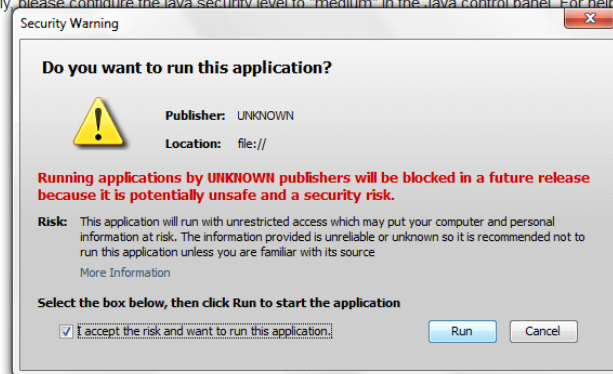


3. Allow the applet to run.



4. Allow the applet to run when the Security warning prompts. The applet is in no way harmful to your machine. This security prompt appears 3 times. Click 'run' for each prompt.

In order for the tool to run correctly, please configure the java security level to "medium" in the Java control panel. For help with configuring, go to: [Java security help](#)



5. Have fun interchanging with *SUGOI!*

After you have put in the input parameters, *SUGOI!* takes a few minutes to process. For large ontologies, this may take even longer. The applet appears to have frozen if you play around with the scroll bar. Don't refresh the page or close the tab. Rather keep working on a new tab and check on the applet a few minutes later. Once the progress bar is complete and the output box says the interchangeability is complete, the process is finished.

SUGOI! Software Used for Ontology Interchangeability!

Input

1. Load source ontology
2. Select source's foundational ontology
3. Select target's foundational ontology
4. Interchange ontology

1.

2. Source FO

- DOLCE
- BFO
- GFO

3. Target FO

- DOLCE
- BFO
- GFO

4.

Log

Progress

Output

About *SUGOI!*

between foundational ontologies, in order to improve semantic interoperability.

Contact:
Developer: Zubeida C. Khan
email: zkhan@csir.co.za
Supervisor:

SUGOI! Software Used for Ontology Interchangeability!

Input

1. Load source ontology
2. Select source's foundational ontology
3. Select target's foundational ontology
4. Interchange ontology

1.

2. Source FO

- DOLCE
- BFO
- GFO

3. Target FO

- DOLCE
- BFO
- GFO

4.

Log

Input file: C:\Users\Zubeida\Desktop\pellet-2.2.0\gfo-populated.owl (loaded)
Source foundational ontology: GFO
Target foundational ontology: DOLCE

Progress

Output

Processing.....
Deleted extra mapping object properties
Conversion complete: success!
Target after: Ontology(OntologyID(OntologyIRI(<http://www.foa-cnr.it/ontologies/DOLCE-Lite.owl>))) [Axioms: 570 Logical Axioms: 375]
Your ontology has been interchanged and is stored at: C:\Program Files (x86)\Mozilla Firefox\Interchanged\gfo-populated-DOLCE.owl

About *SUGOI!*

between foundational ontologies, in order to improve semantic interoperability.

Contact:
Developer: Zubeida C. Khan
email: zkhan@csir.co.za
Supervisor: